

Leica iCON build

Layout Objects straight from MEP/BIM design models



iCON

intelligent
CONstruction

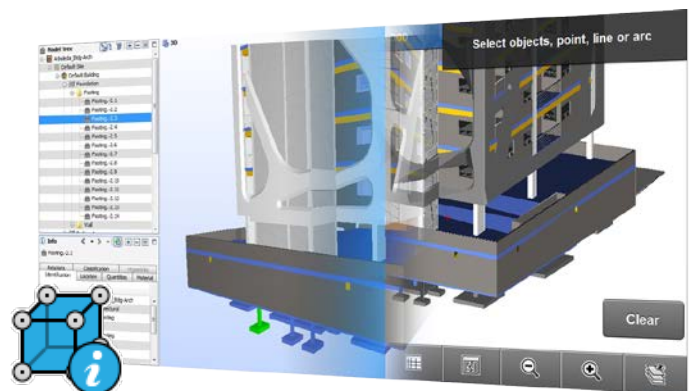
DATAFLOW ISSUES ON CONSTRUCTION SITES CAUSE SEVERAL CHALLENGES:

- Difficult coordination between VDC/BIM design teams in the office and construction experts on site
- Non-standard data sets cause loss of critical constructible information
- Data overload with complex design models

These challenges can be easily overcome with the Leica iCON build Layout Objects App. This easy-to-use solution enriches your data with intelligent model object information without over-complicating the process.

OBJECT-DRIVEN CONSTRUCTION LAYOUT:

- Keep using object meta-data with the only construction layout field solution supporting an object-driven layout approach based on IFC data



- Immediately start laying out by simply loading IFC data straight from your MEP/BIM design software and graphically selecting objects
- Simplify complex design data in an easy-to-read graphical interface with iCON build's unique "Zlider Bar"

Digitalise the construction site with the Layout Objects App

Intuitively reduce complex projects into workable packages



- Process directly to fill layout list from object selection



- No more coordination issues between VDC/BIM design teams in the office and construction teams on site



- Slider Bar allows you to vertically cut out building model elements for best map visualisation



- Import IFC files from MEP/AEC/BIM design software and visualise 3D design models



- Map organisation and object selection via typical IFC tree structure



- Object-driven layout process with automatically generated object's corners and edges

Leica Geosystems AG
leica-geosystems.com



© 2017 Hexagon AB and/or its subsidiaries and affiliates. Leica Geosystems is part of Hexagon. All rights reserved.

Illustrations, descriptions and technical data are not binding. All rights reserved. Printed in Switzerland – Copyright Leica Geosystems AG, Heerbrugg, Switzerland, 2017. 853725en - 01.17

- when it has to be **right**

